



# CASE STUDY

## New control system

*November, 2019*

*Revision 0*

Global Boiler Service A/S  
9230 Svenstrup J, Jellingvej 6. Denmark Telephone: +45 70 277 170



## INTRODUCTION

The boiler control system from Global Boiler Service A/S is engineered to ensure safe and reliable operation with minimum attendance. This is achievable via use of high quality components and an “easy to use” user interface.

The base of the system is the new Siemens S7-1500 PLC. Siemens is supplying high quality components with worldwide availability. Further, there is a supply guarantee of 10 years when components are replaced with new models. This guarantees you a **long lasting solution!**

The system is implementable in a “single boiler” system or in a “multiple boiler” system where a common section is added.

For new building or retrofit, and available to any kind of boiler and burner.

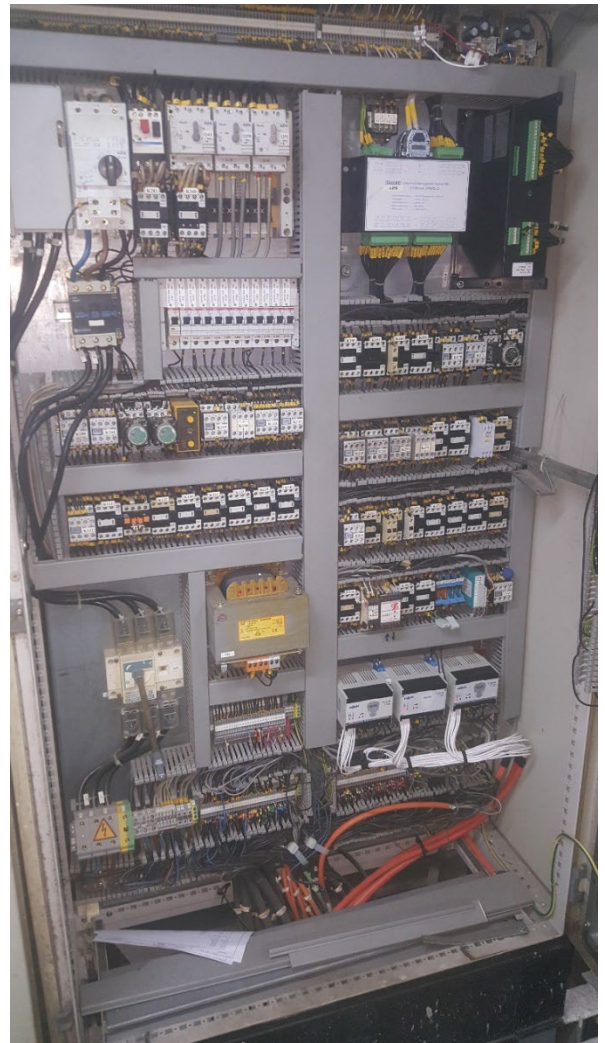
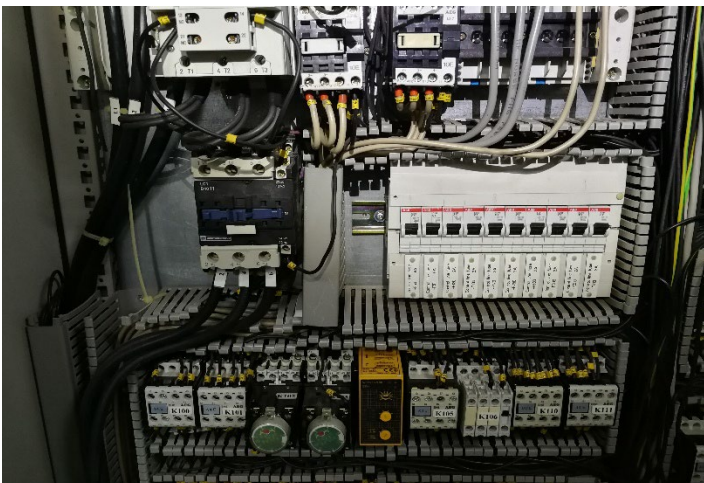
## CASE STUDY

- Customer has requested an upgrade of the boiler control system in order to improve operational safety and to reduce cost on spare parts and service.

### Replacement of old control systems onboard Cruise Vessel:

- Old control systems are de-commissioned and new are installed.
  - Cabling and various transmitters/switches are re-used in order to reduce cost and installation time.
- New HMI touch panels are installed locally and in ECR.
- New water level electrodes installed.
- New smoke density system is installed on both boilers and on incinerator.
- Cabling on burners are renewed to improve operation.
- Commissioning and training of crew.
- Tested with Class and handed over to crew.

## OLD CONTROL SYSTEM





## DECOMMISSIONING OF OLD CONTROL SYSTEM



- The old control system is removed from the cabinets.

- The new system will be installed in the existing cabinets.

By re-using the existing cabinets we save installation time as we do not have to make new foundations or erect new frame for mounting of new panels.



## INSTALLATION OF NEW CONTROL SYSTEM



- The new system is delivered pre-assembled and tested on new back plates for easy installation in the existing cabinets.
- Pre-cut steel plates with HMI touch screens and instrumentation are fitted on the cabinet doors.

